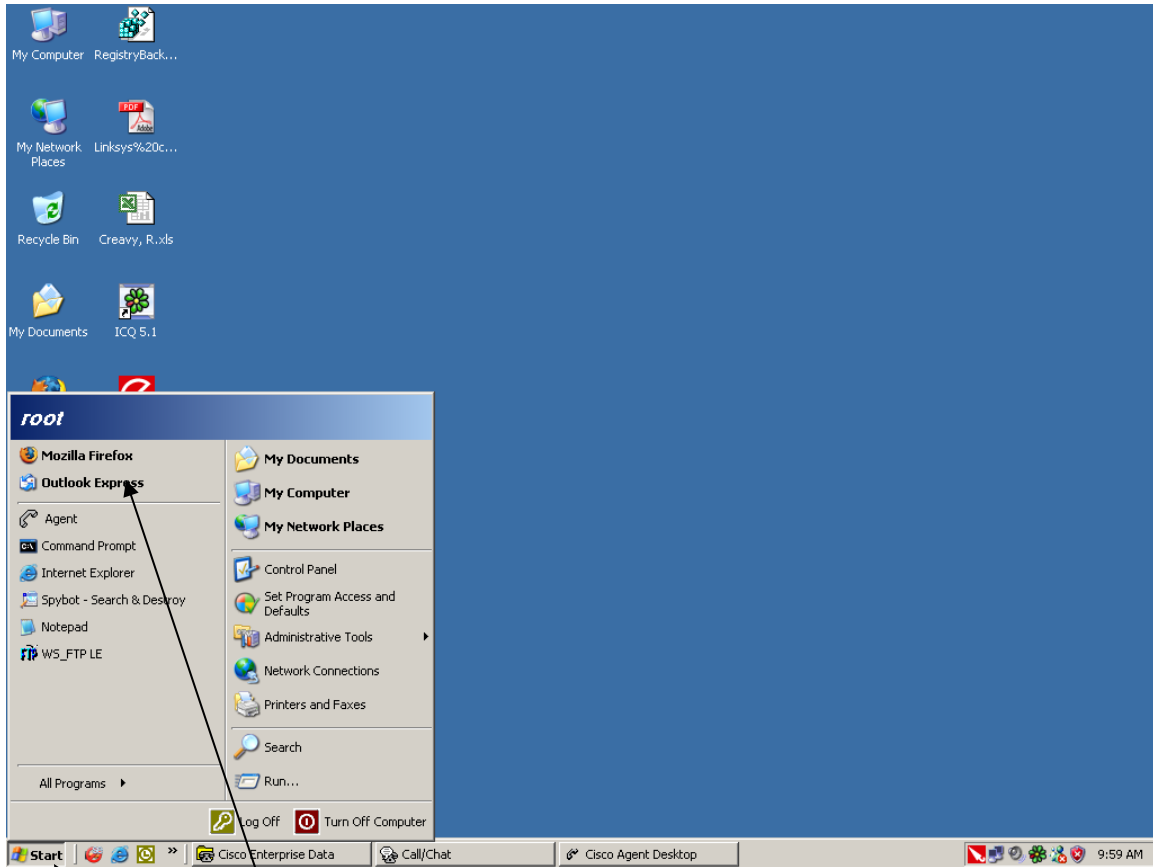
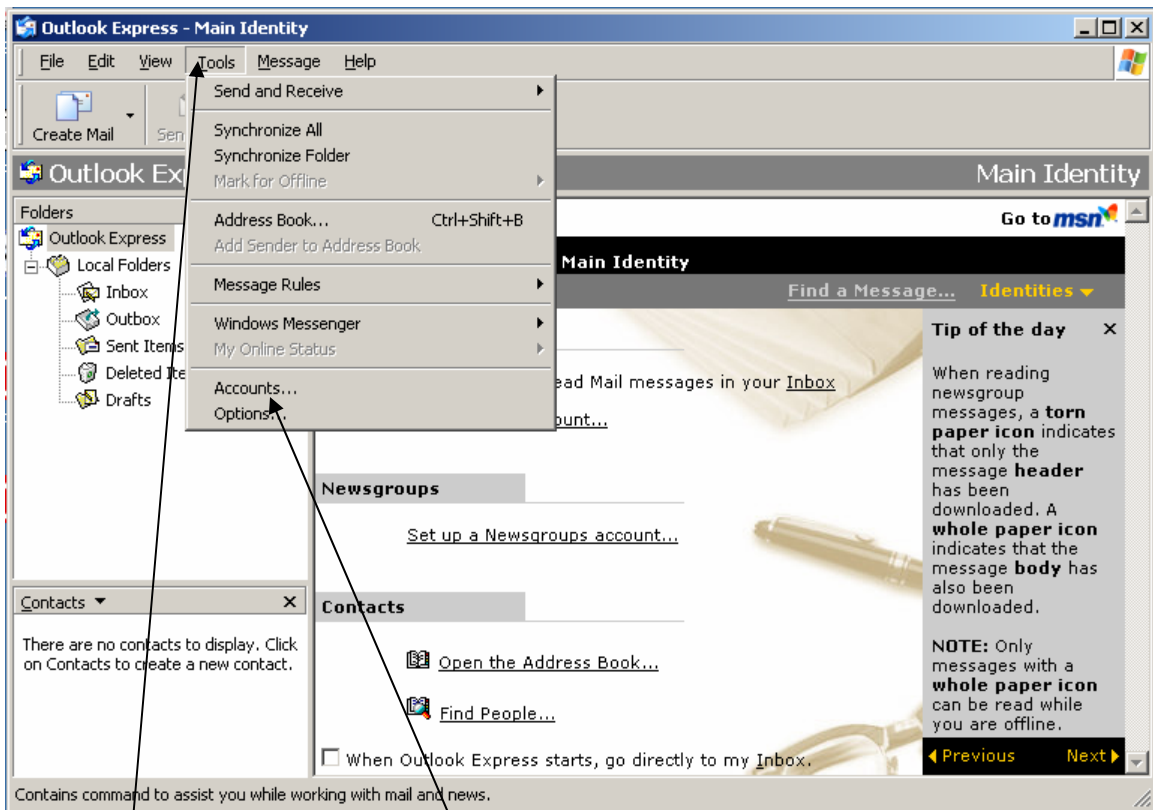


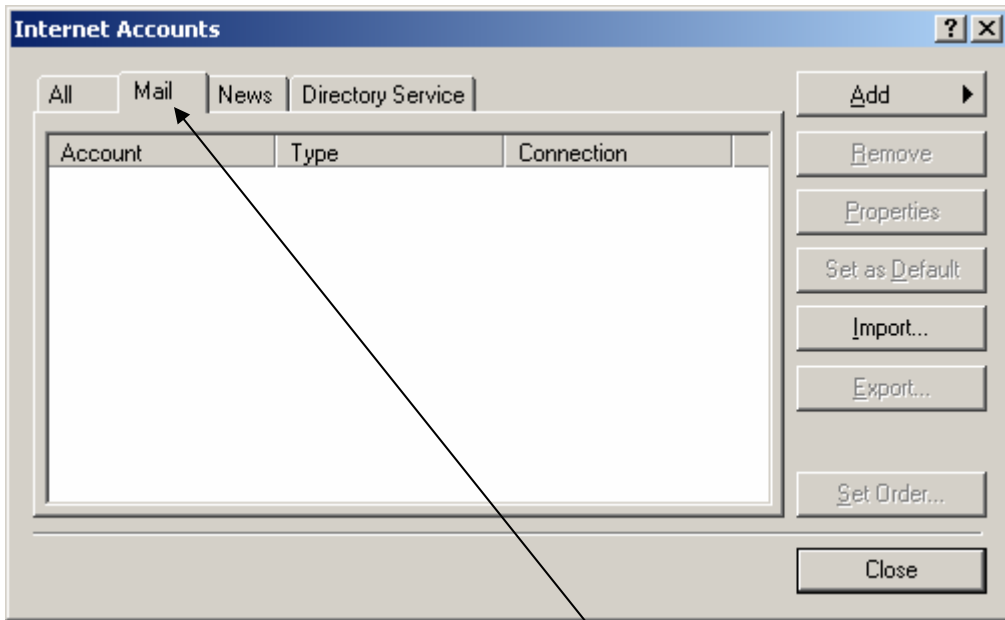
E-mail Setup In Outlook Express Windows XP



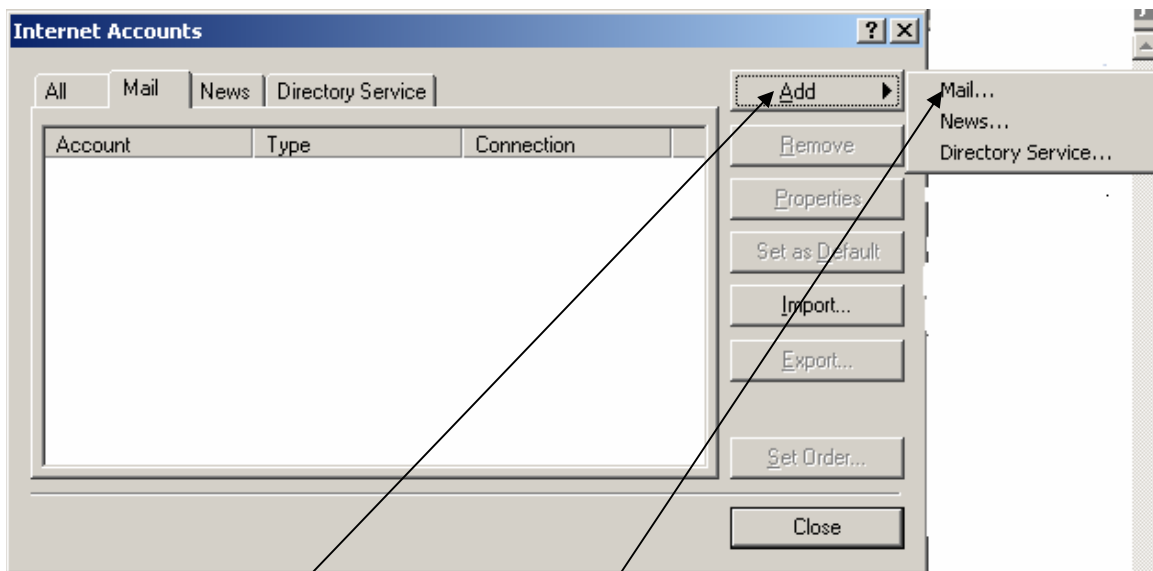
Go to start menu
Open Outlook Express



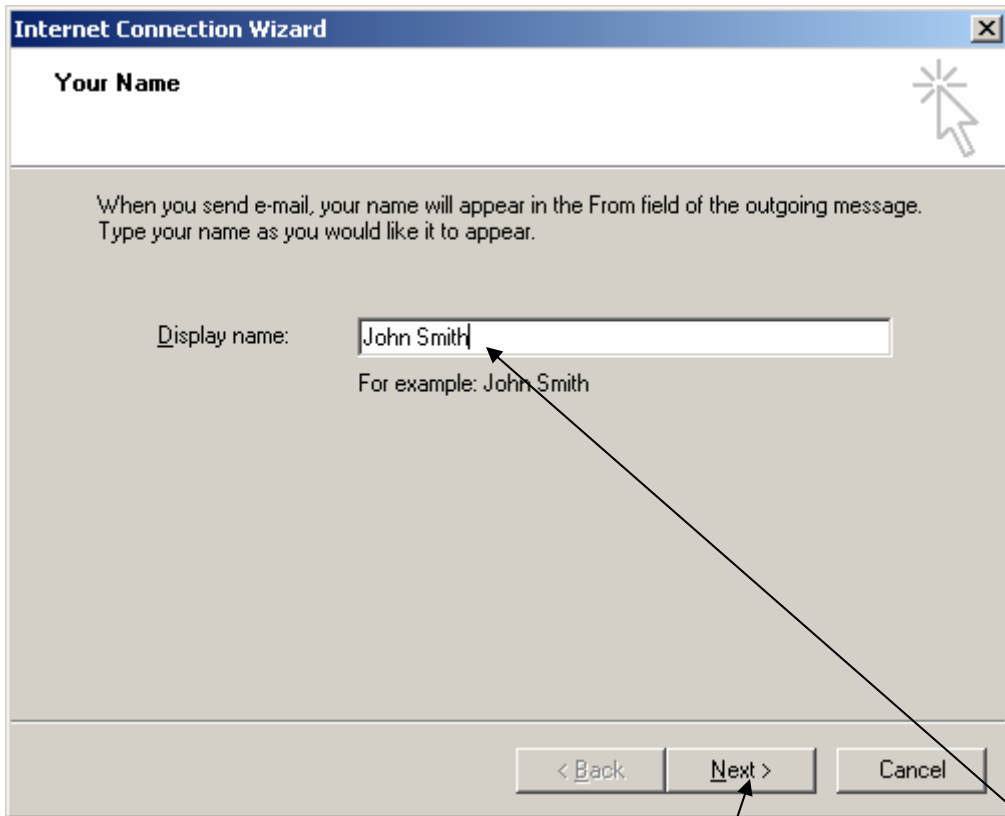
Go to tools and then select accounts



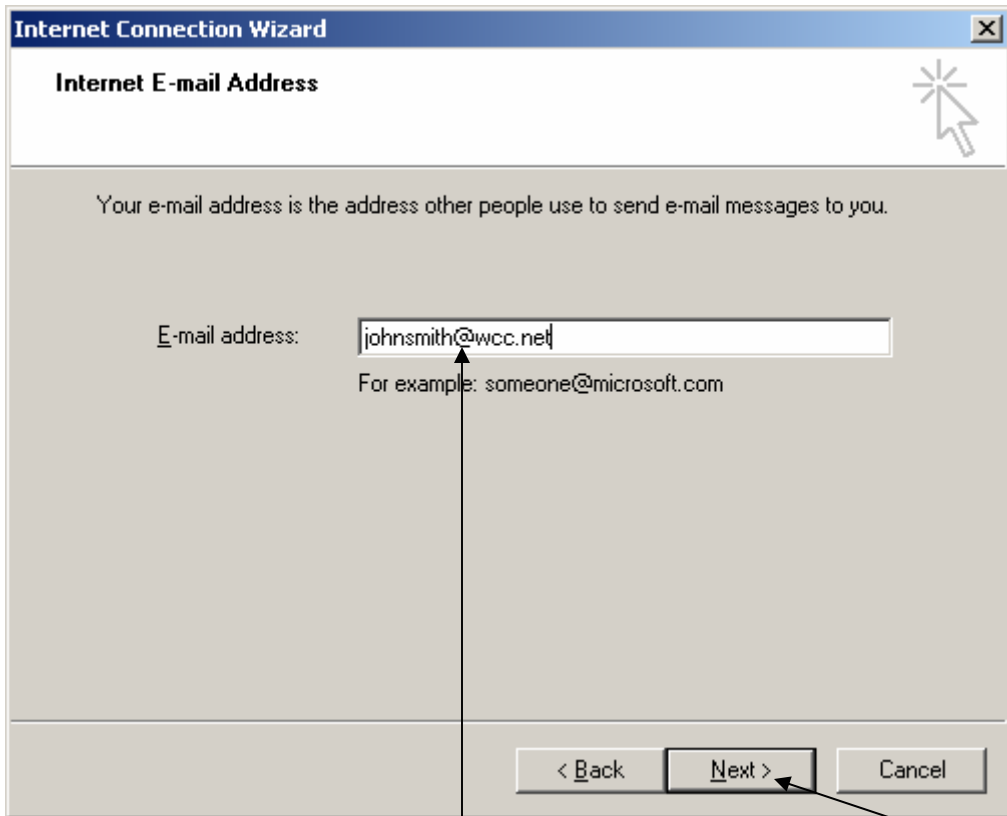
Under internet accounts go to the tab marked mail



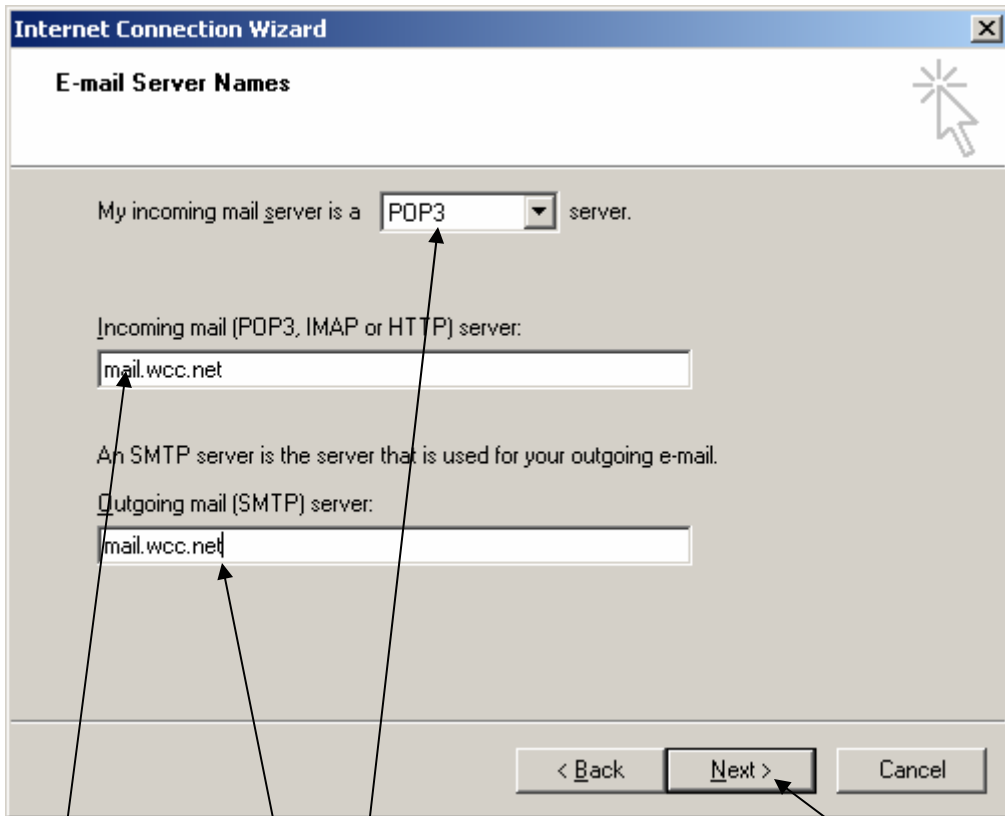
left click on add then left click on mail when the window opens



The internet Connection Wizard will open first thing it will want is display name this will be your name then left click on Next



Next thing it asks for is e-mail address enter that and then left click on next



First line here will be POP3 server then enter the mail servers
Incoming and outgoing will be mail.wcc.net then left click on next

Internet Connection Wizard

Internet Mail Logon

Type the account name and password your Internet service provider has given you.

Account name: johnsmith

Password: ●●●●●●

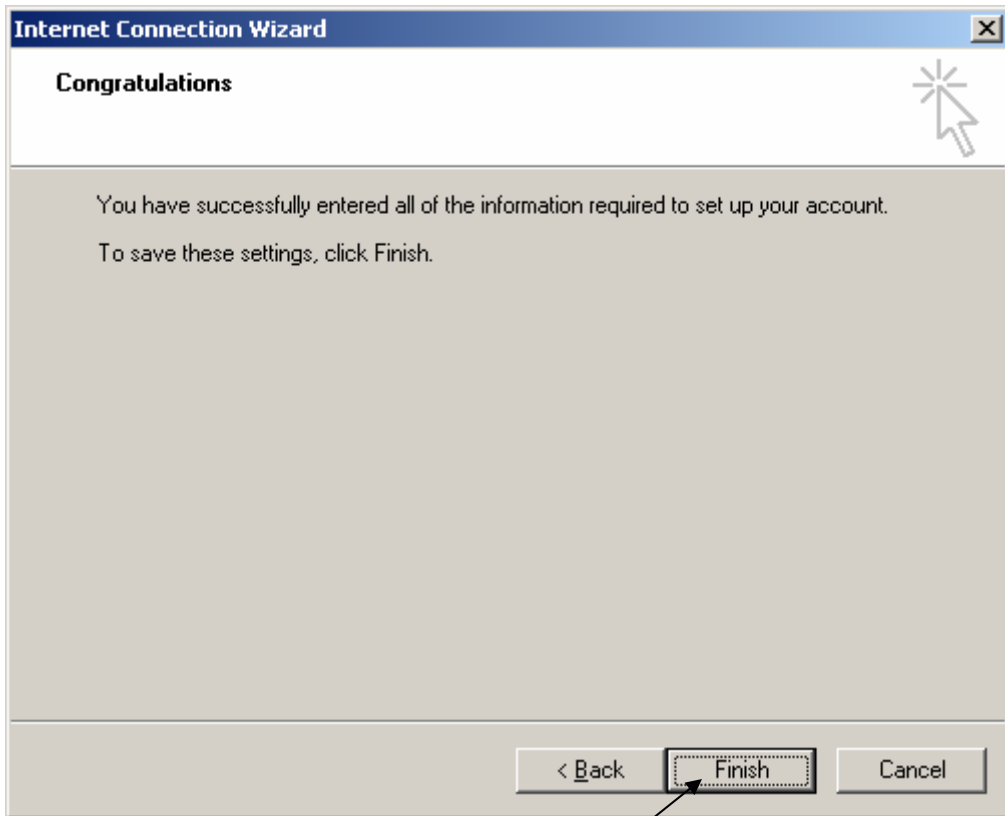
Remember password

If your Internet service provider requires you to use Secure Password Authentication (SPA) to access your mail account, select the 'Log On Using Secure Password Authentication (SPA)' check box.

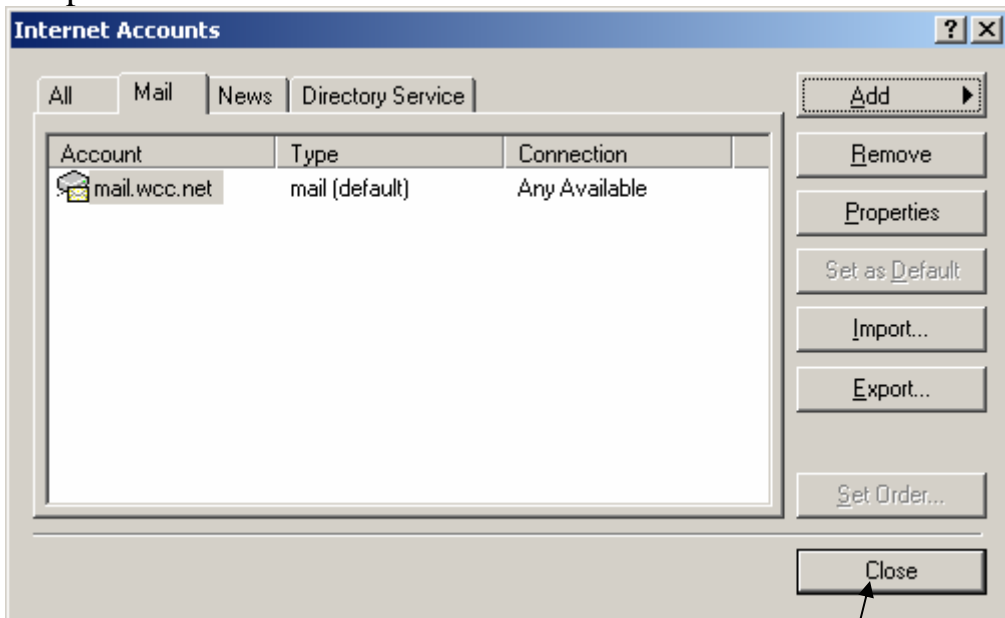
Log on using Secure Password Authentication (SPA)

< Back Next > Cancel

Now it is going to want your account name and password your account name will be the first part of your e-mail address with us and password make sure remember password is checked and nothing else and left click next.



This is the final screen left click on finish to save your settings and you are setup.



this takes you back to internet accounts left click on close and you are done.