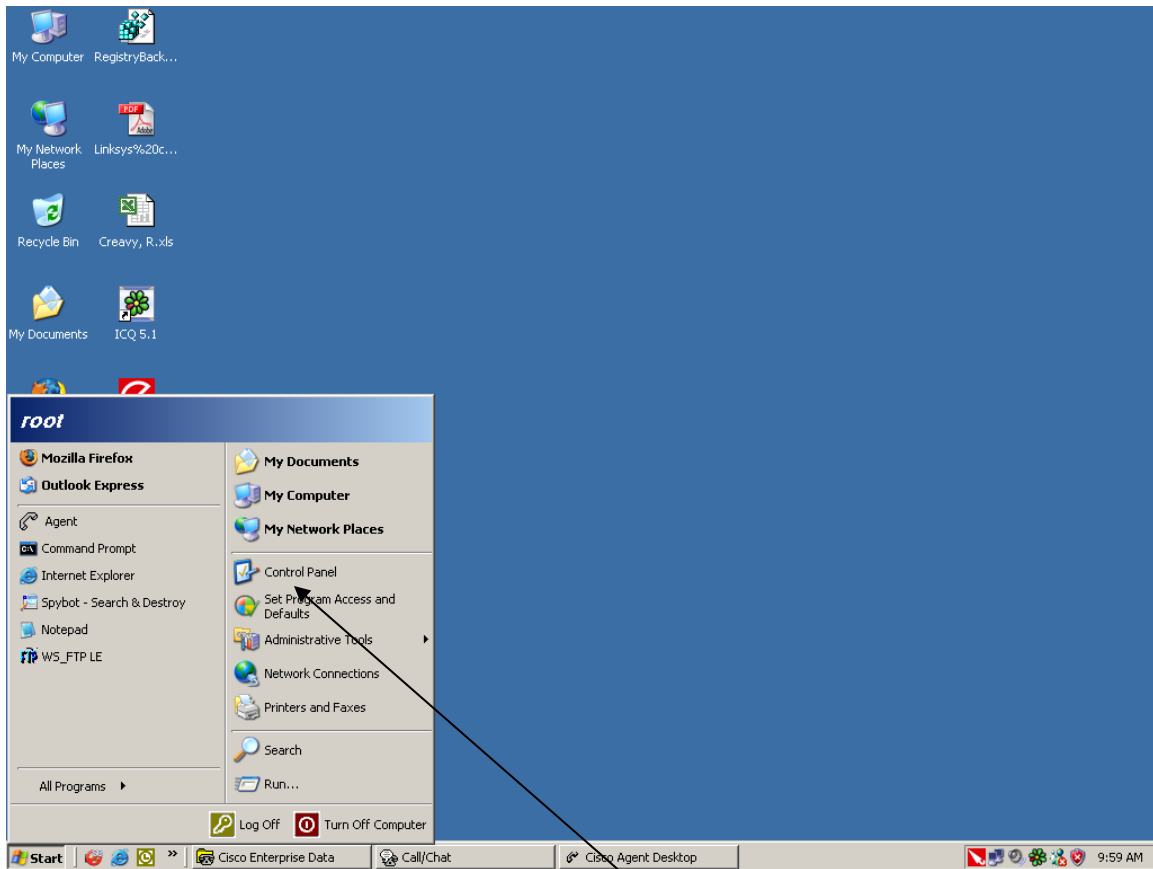
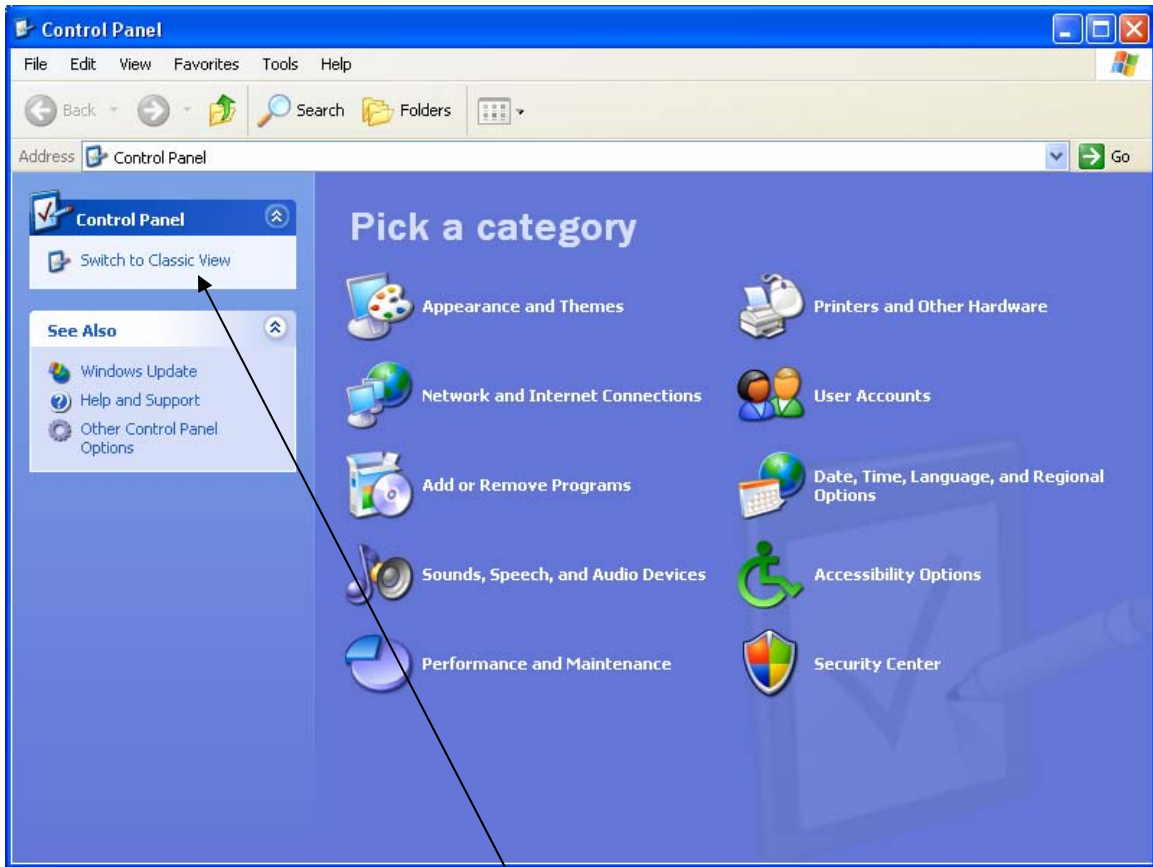


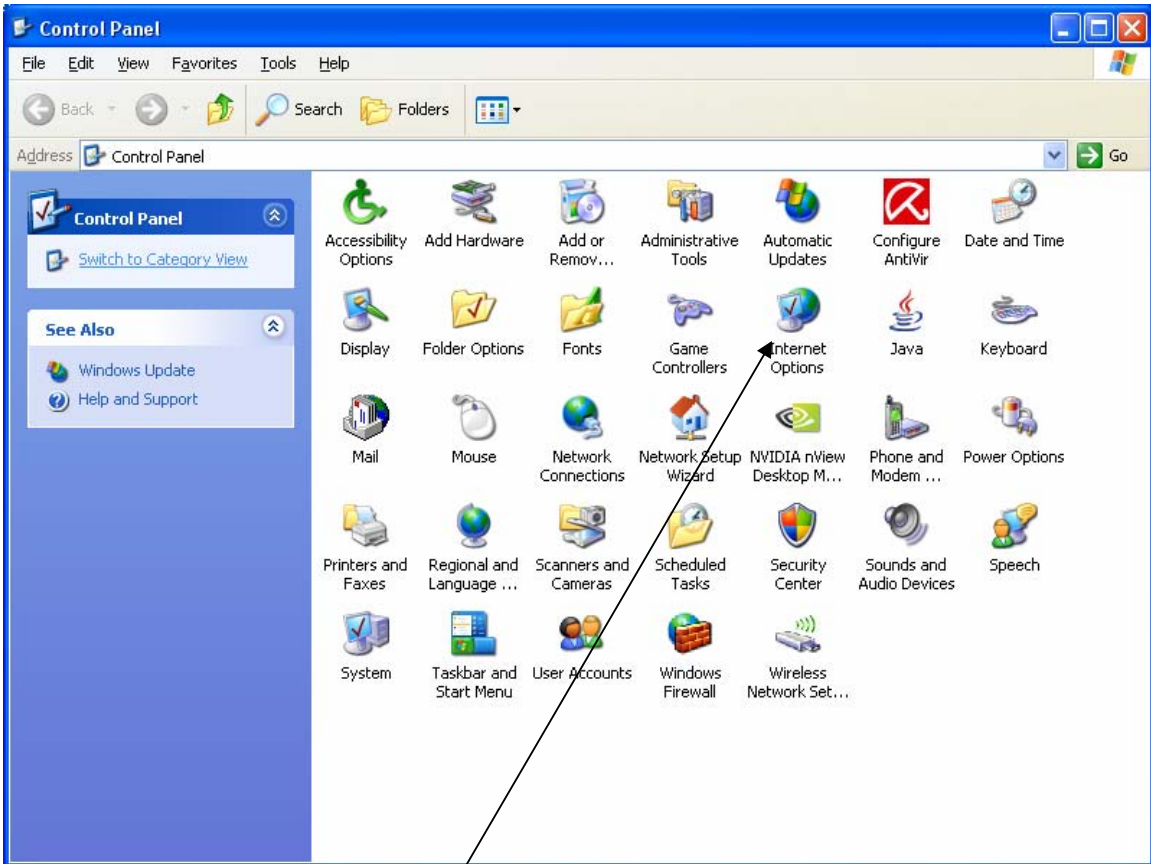
Setting Up Dial up Connection Windows XP



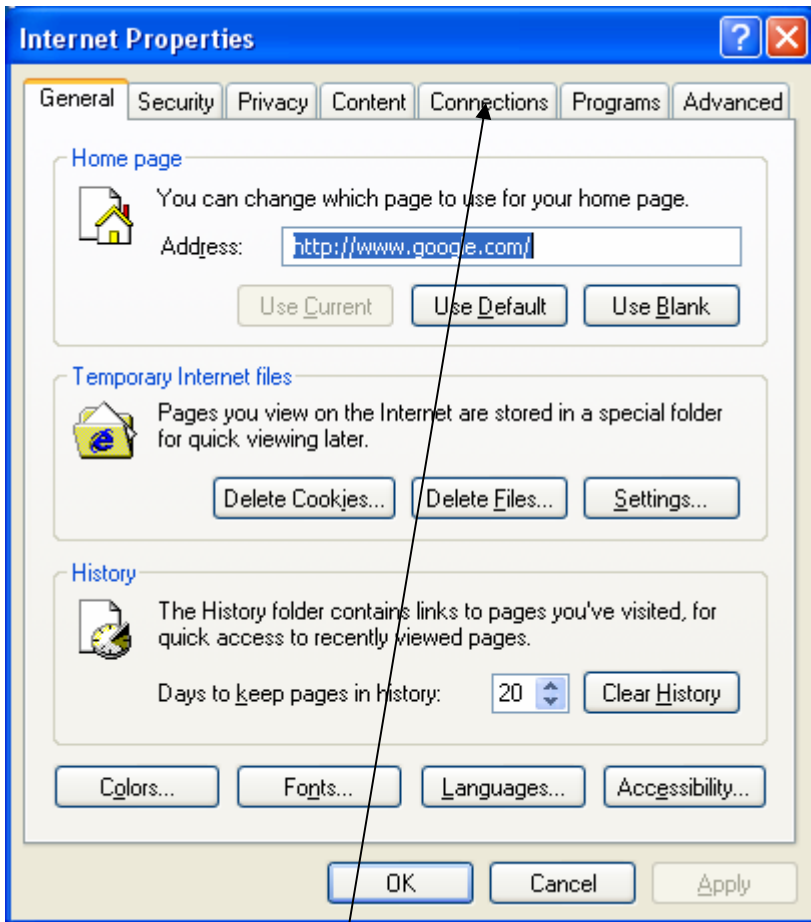
Go to the Start menu and left click on Control Panel



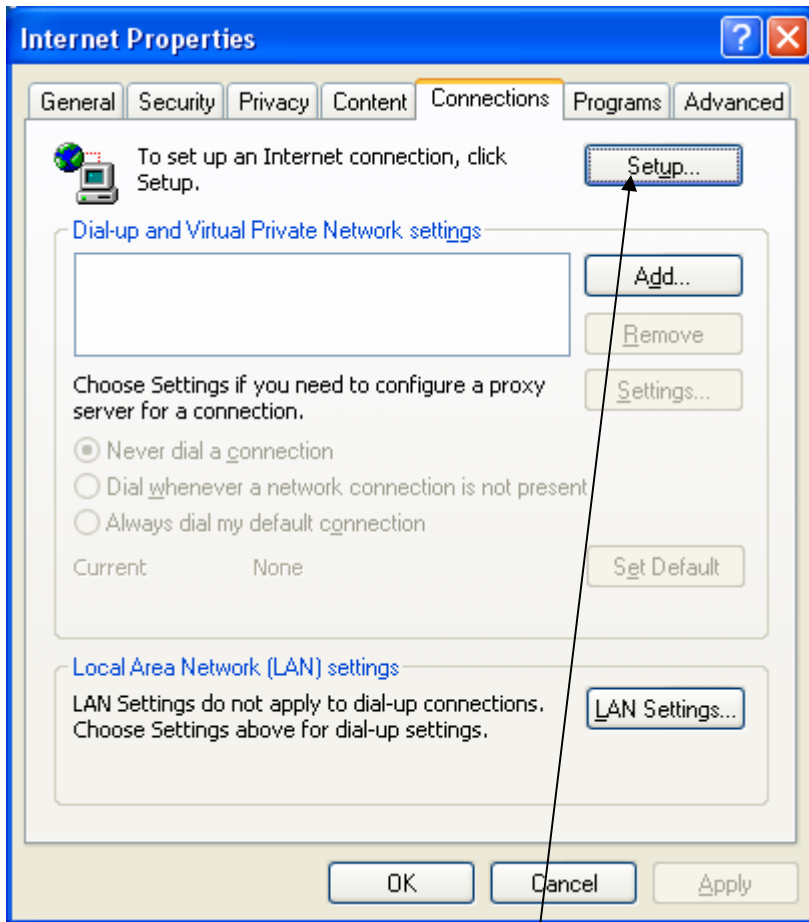
Then left click on Switch to Classic View



Double left click on Internet Options



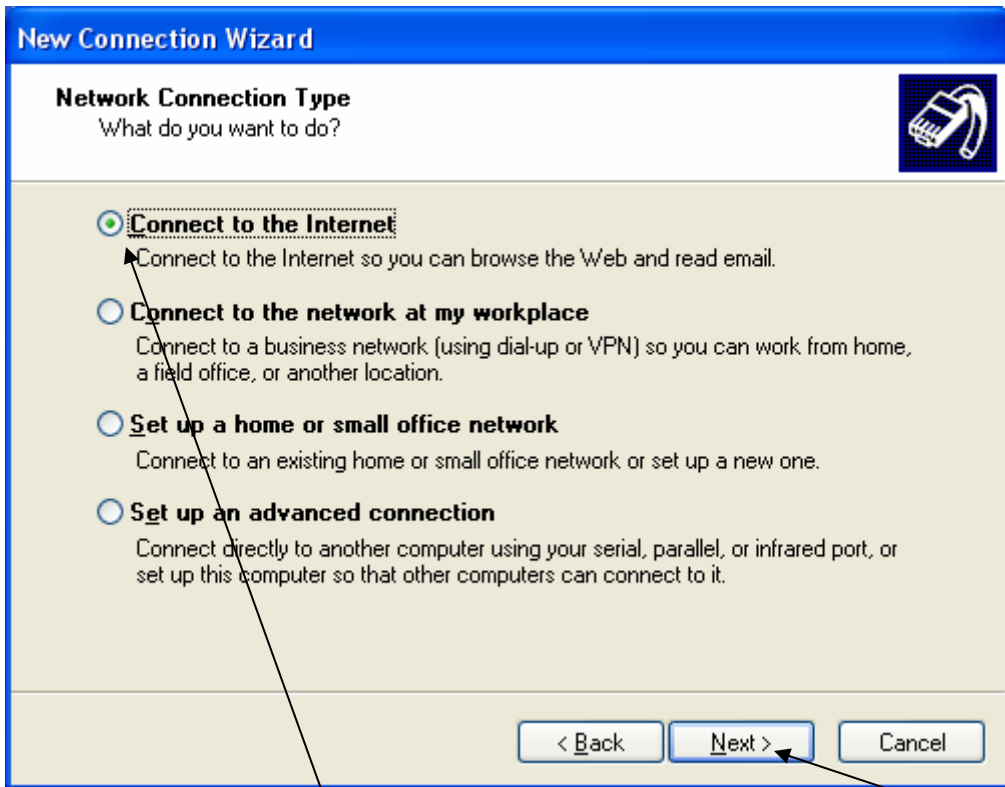
Left click on Connections Tab



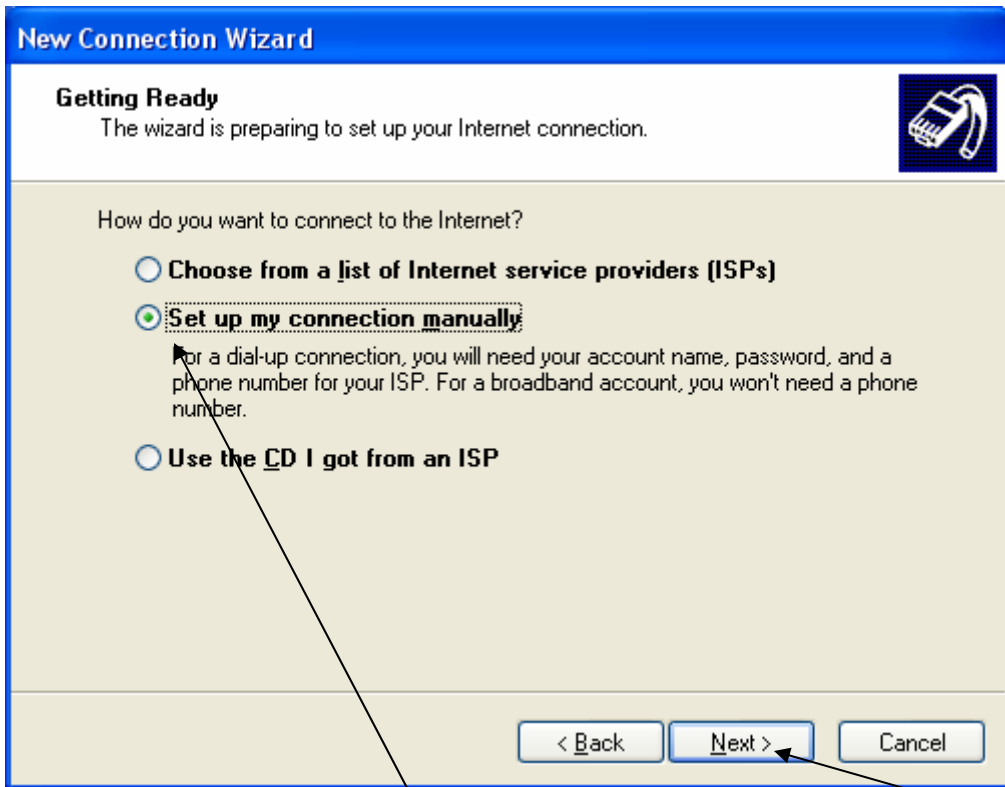
Left Click on the button marked Setup



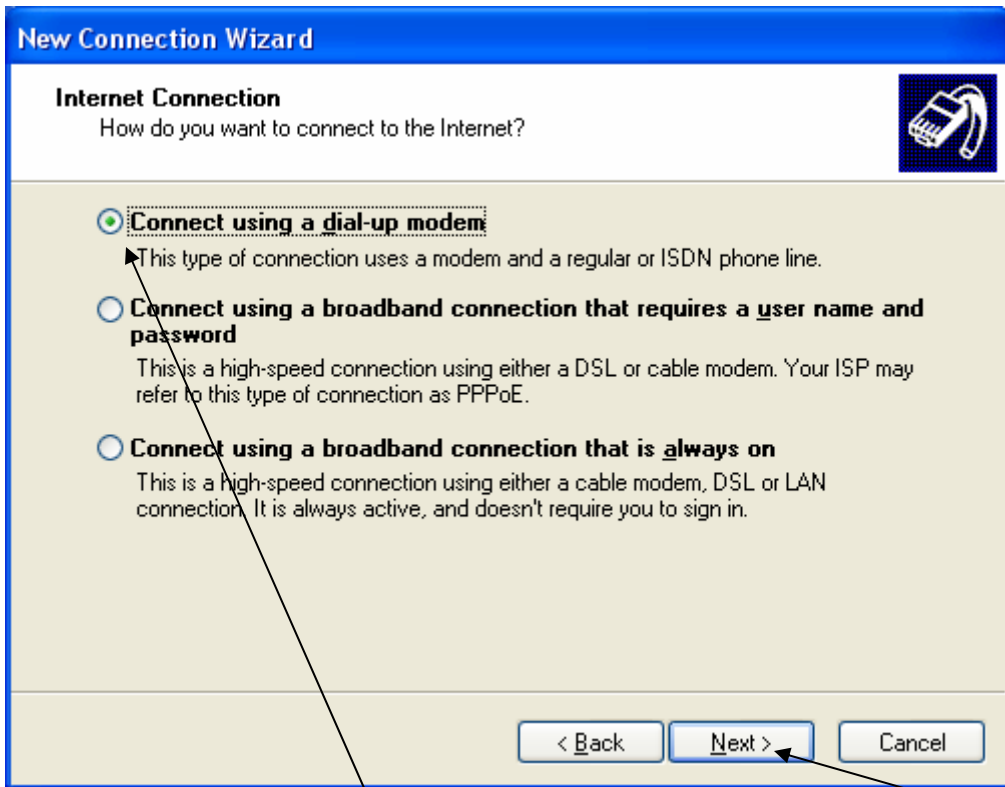
This will open the New Connection Wizard left click on Next



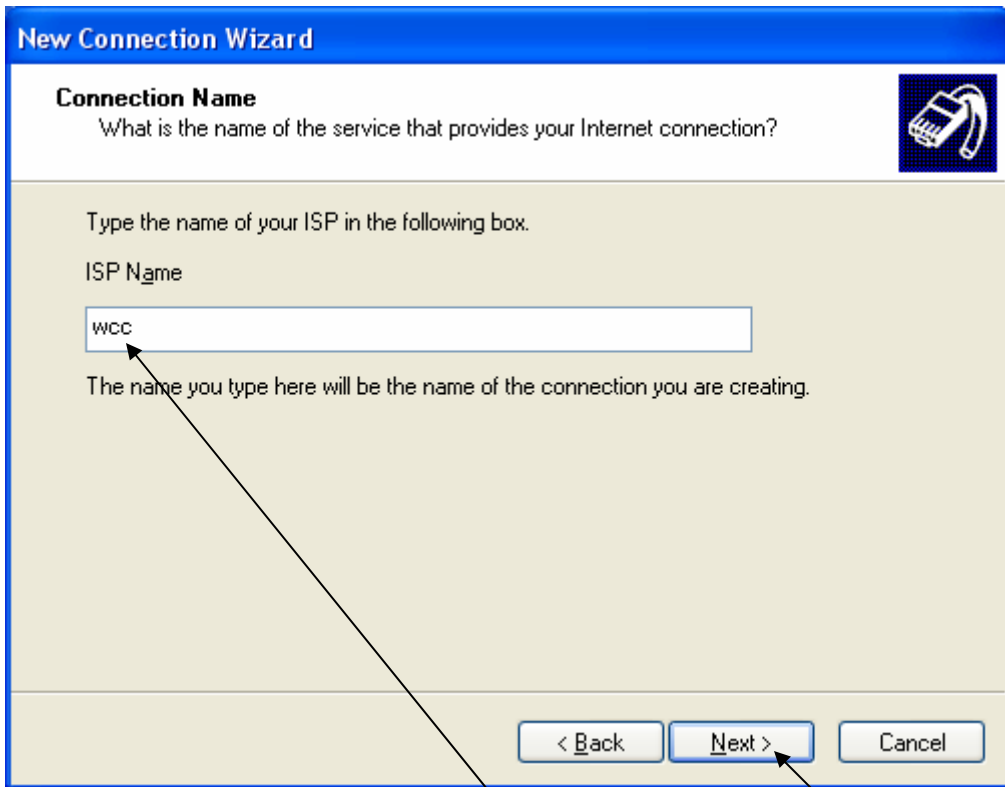
Make Sure Connect to the Internet is selected and then left click on Next



Make sure Set up my connection manually is selected and left click on Next



Make sure Connect using a dial-up modem is selected and left click on Next



Now it wants ISP name just enter wcc and left click on Next



Enter the dial up number for your area and left click on Next

New Connection Wizard

Internet Account Information

You will need an account name and password to sign in to your Internet account.



Type an ISP account name and password, then write down this information and store it in a safe place. (If you have forgotten an existing account name or password, contact your ISP.)

User name:

Password:

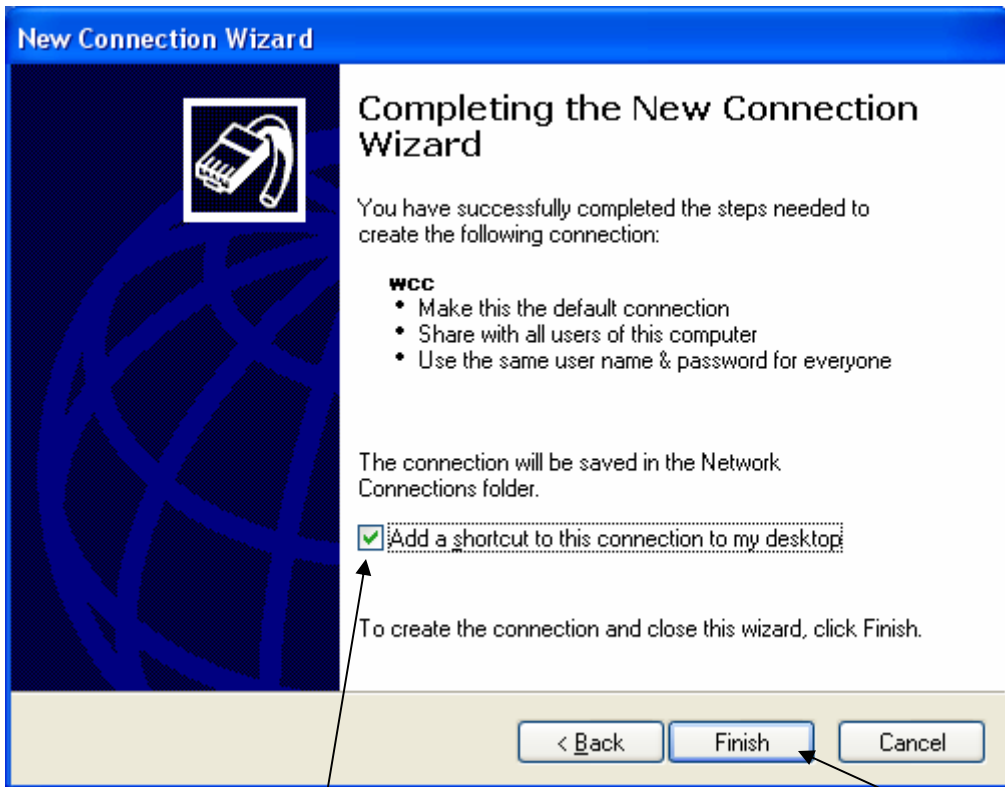
Confirm password:

Use this account name and password when anyone connects to the Internet from this computer

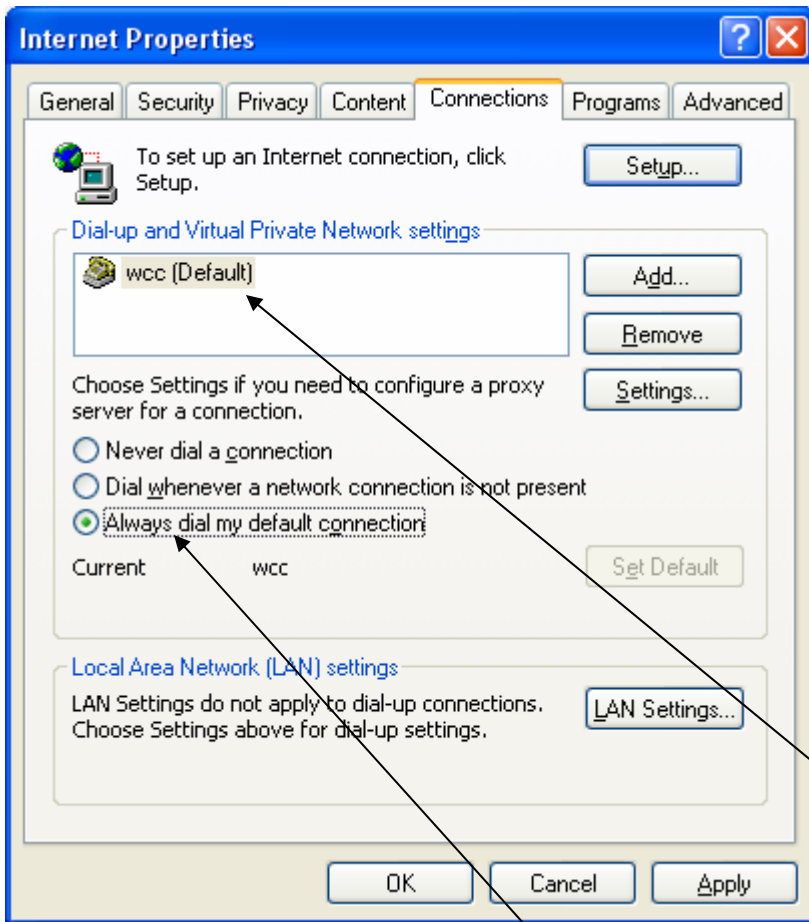
Make this the default Internet connection

< Back Next > Cancel

Enter your username and password in spaces provided, and left click on Next



Left click on the square next to Add a shortcut to this connection to my desktop, this will put a check mark in the box, and then left click on finish



Now under Internet properties on the connection tab you should see wcc (default) that is your dialer and Always dial my default connection should be selected