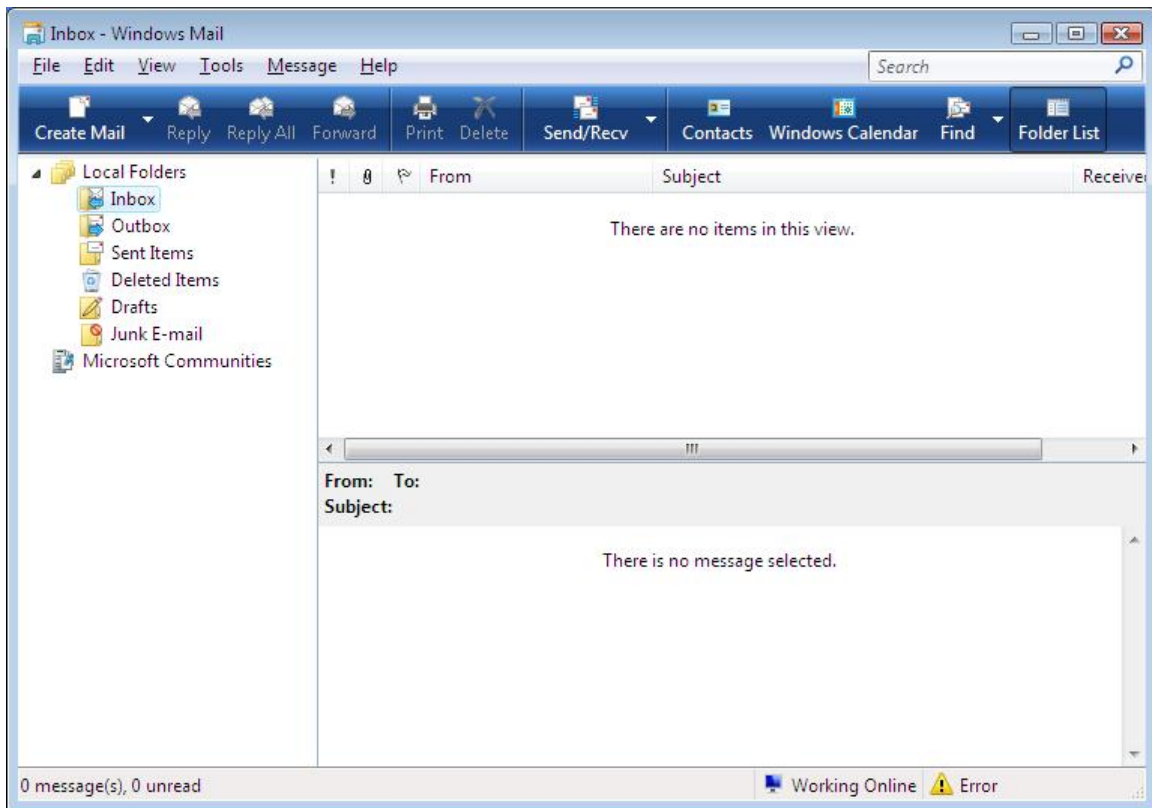
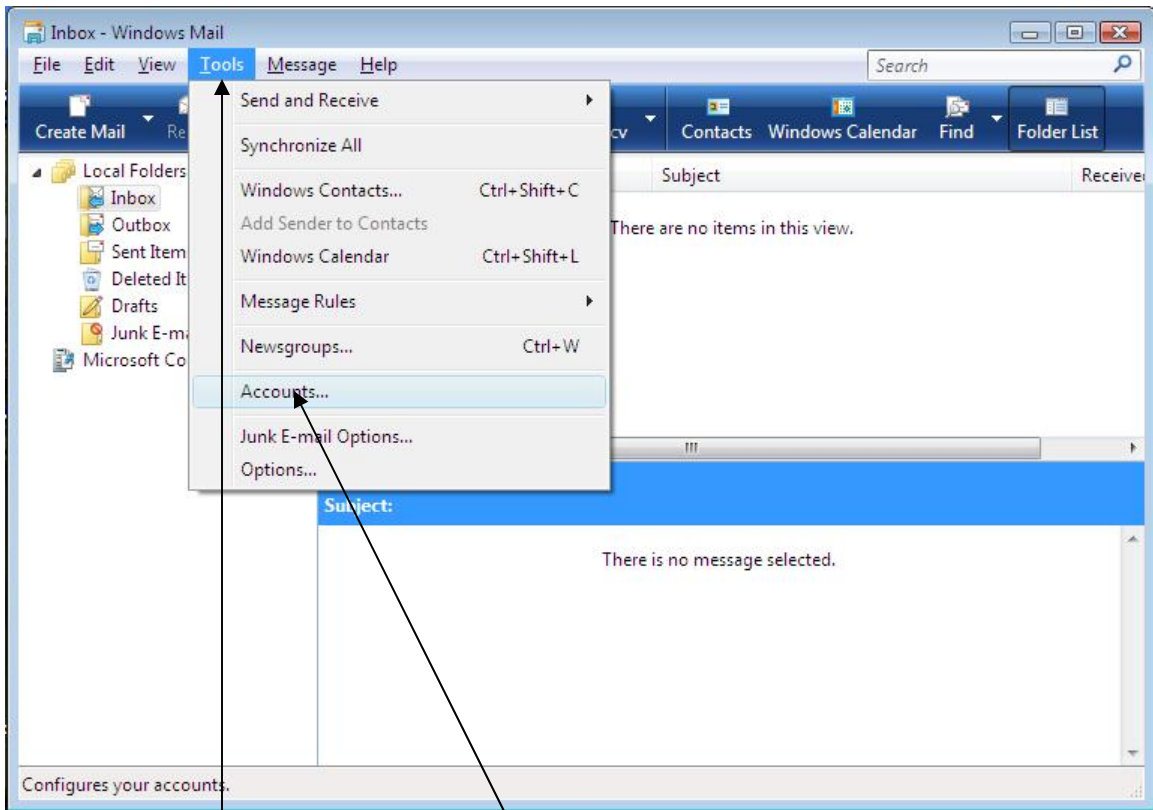


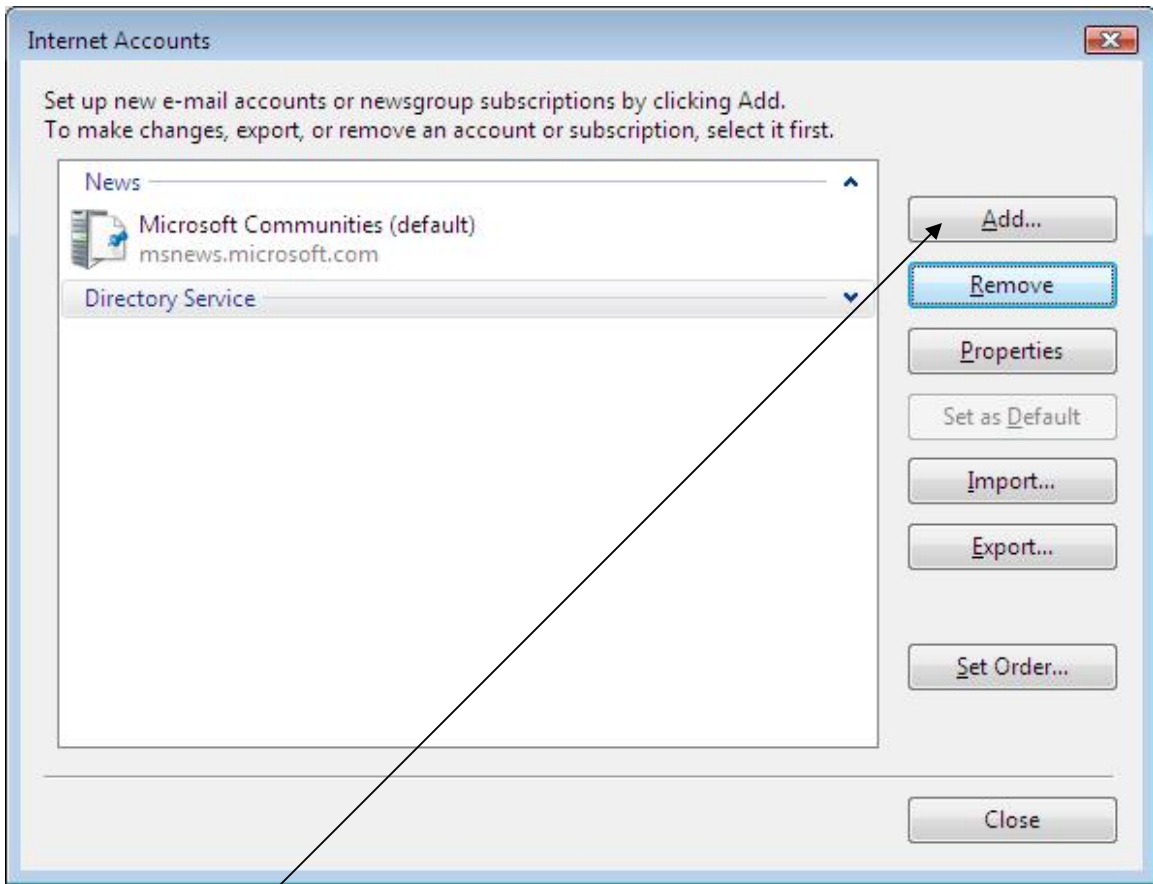
E-mail setup Outlook Express Windows Vista



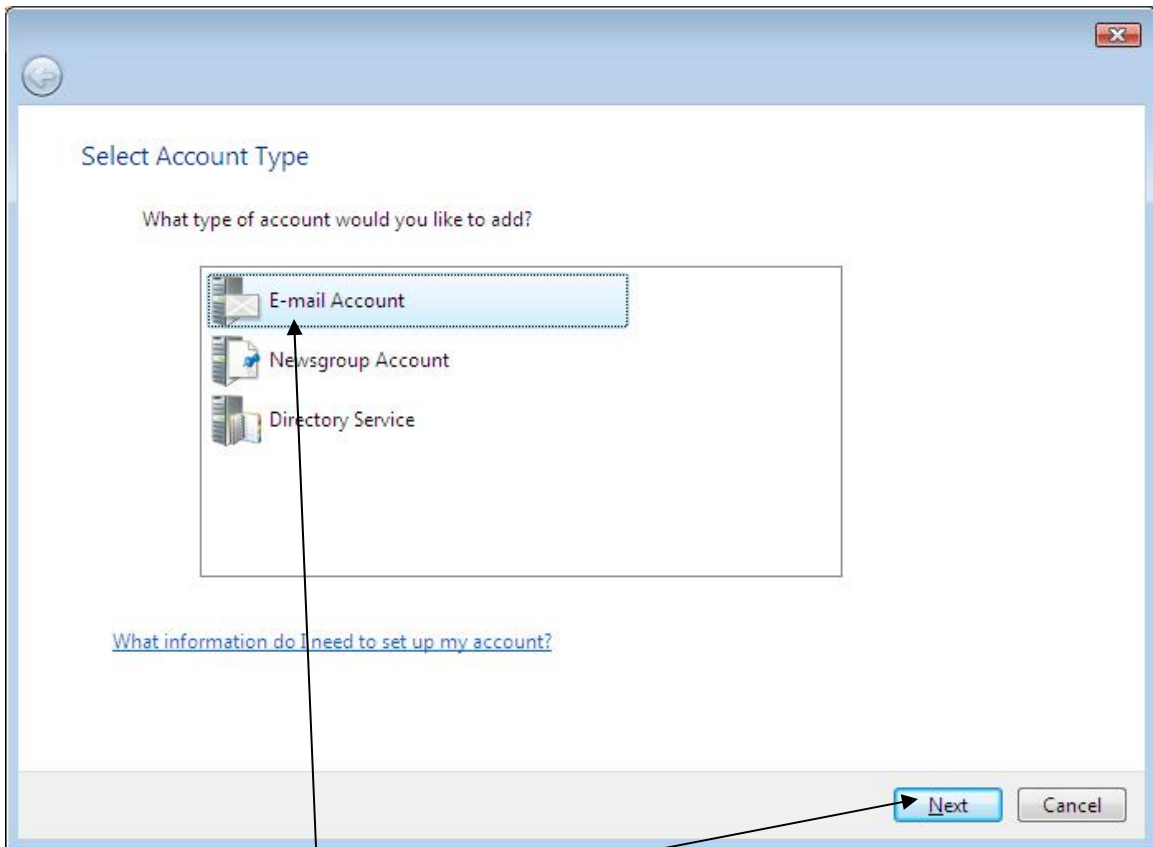
First open your Outlook express



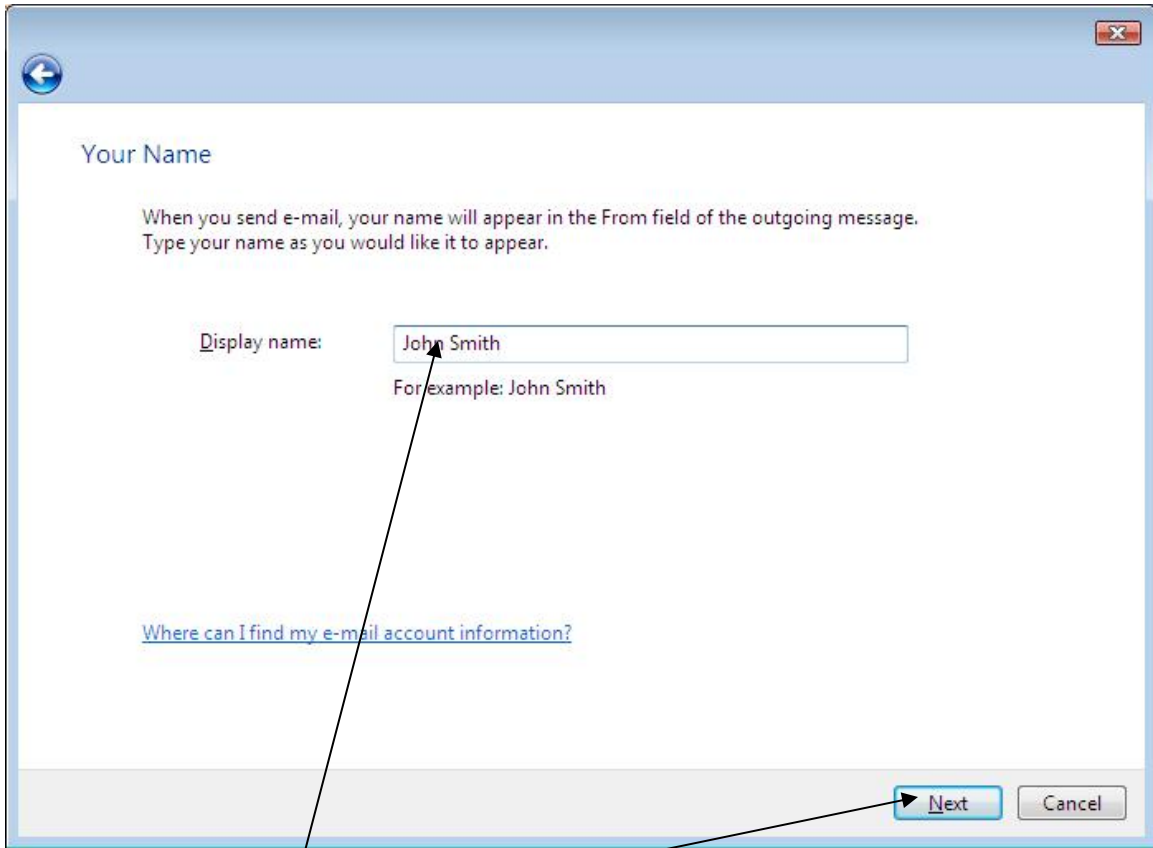
Left click on Tools and select Accounts from the drop down menu by left clicking on it.



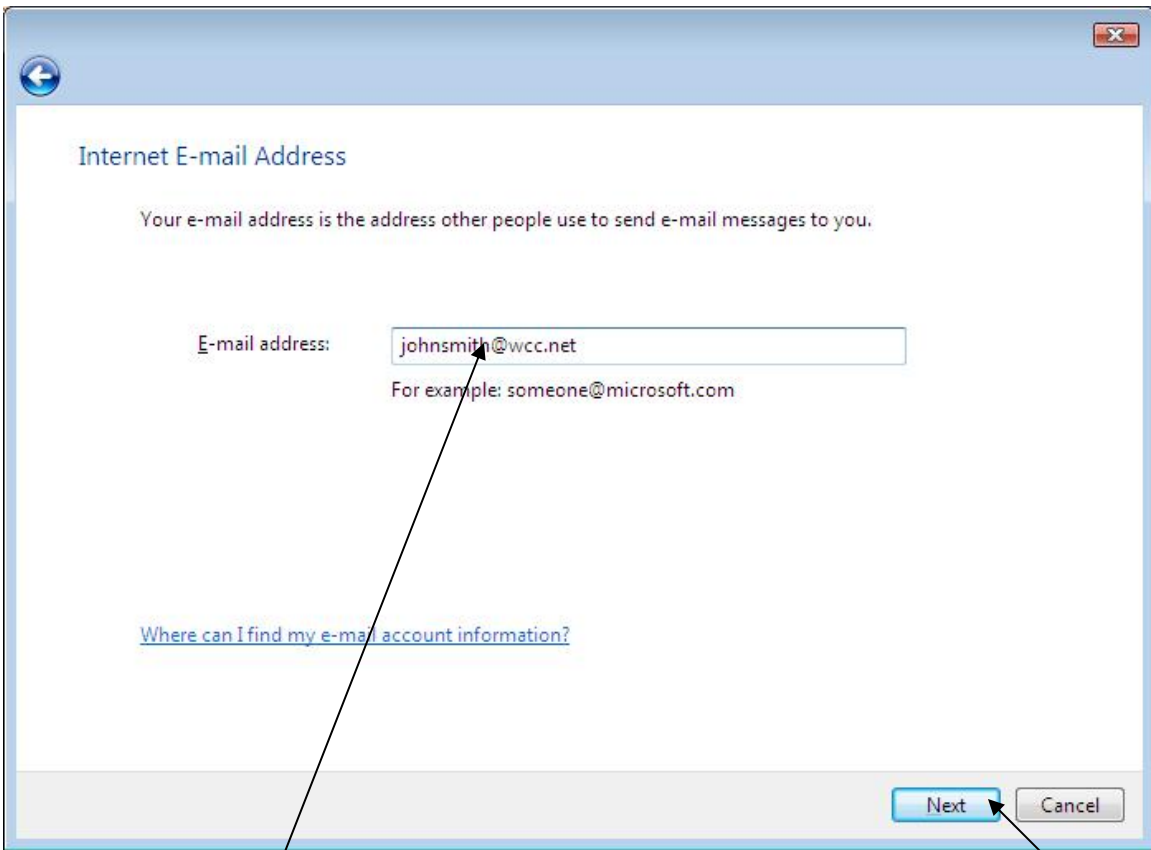
Left click on Add



Left click on E-mail Account in the window and it will highlight then left click on Next



Enter your display name in the space provided this will be your name then left click on next



Enter your e-mail address in the space provided and then left click on Next

Set up e-mail servers

Incoming e-mail server type:
POP3

Incoming mail (POP3 or IMAP) server:
mail.wcc.net

Outgoing e-mail server (SMTP) name:
mail.wcc.net

Outgoing server requires authentication

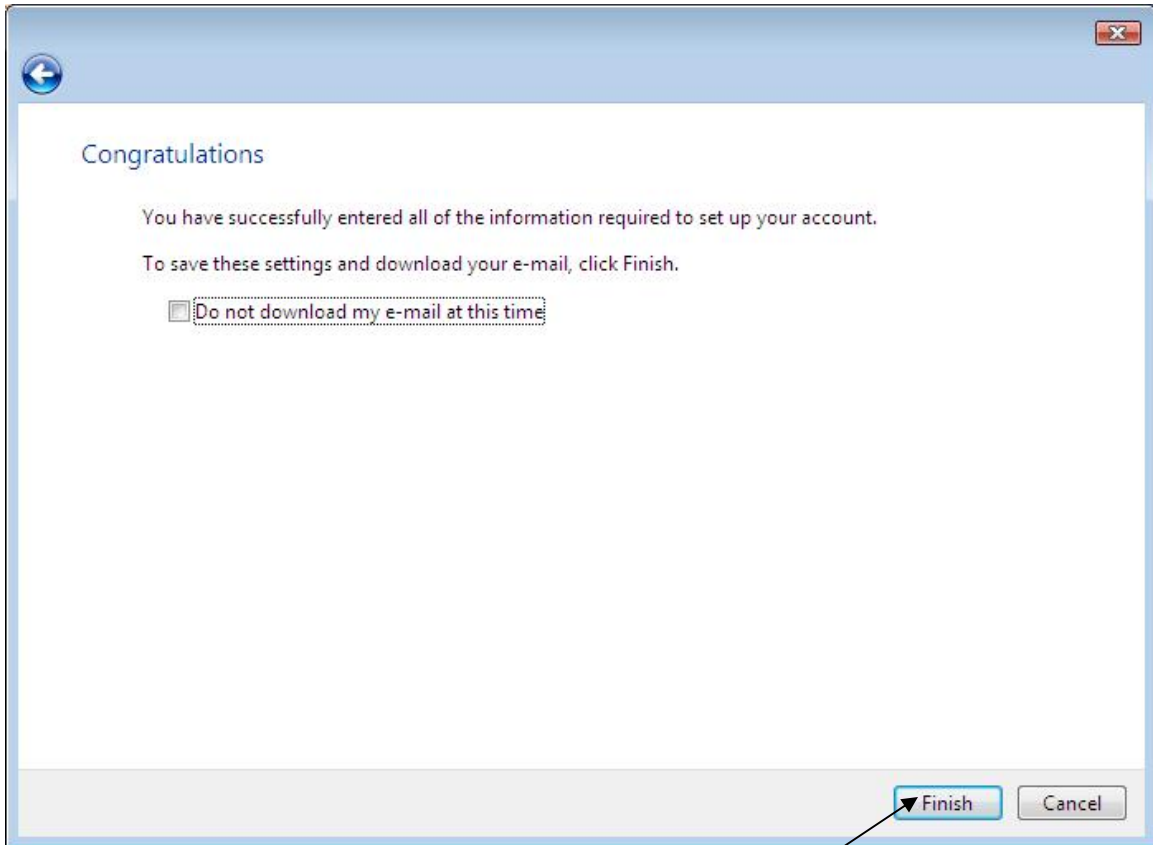
[Where can I find my e-mail server information?](#)

Next Cancel

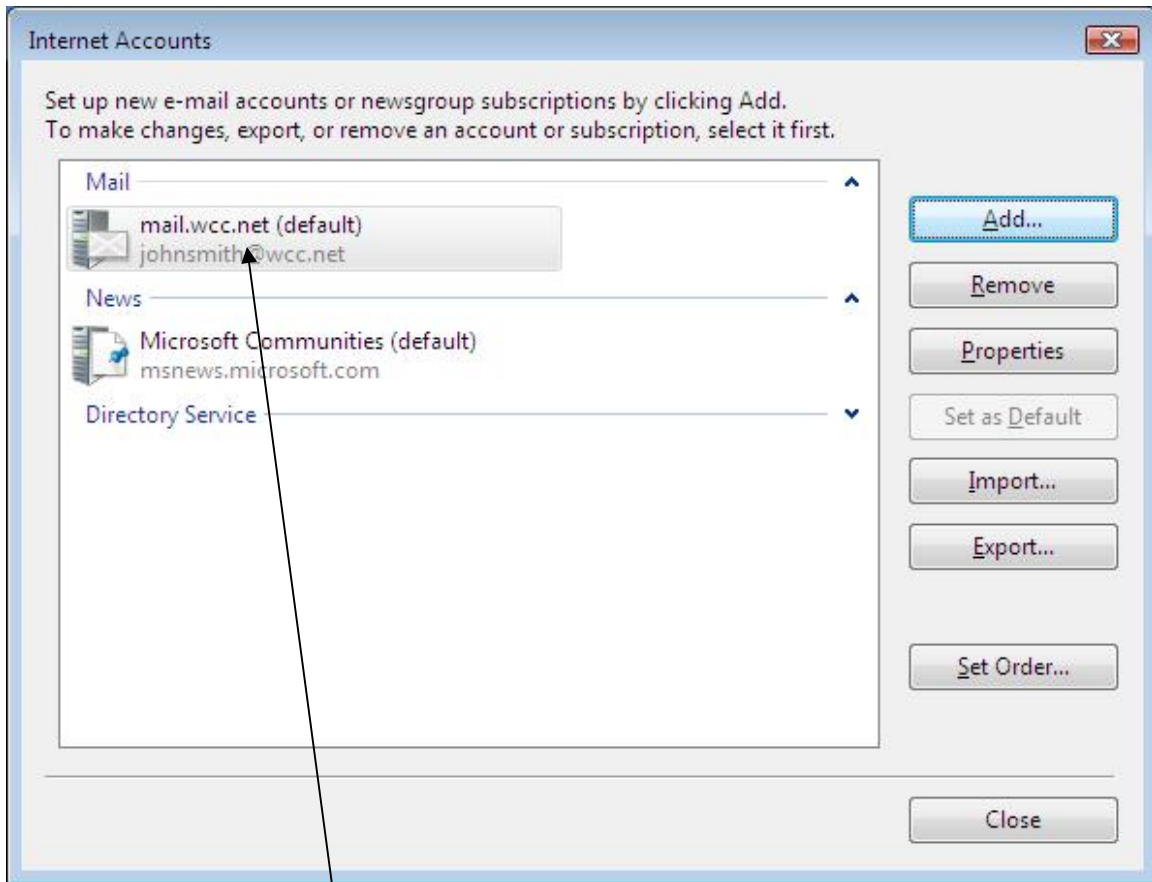
Incoming e-mail server type is POP3 and the incoming and outgoing mail servers will be mail.wcc.net then left click on Next

The image shows a screenshot of a Windows-style dialog box titled "Internet Mail Logon". The dialog has a blue header bar with a back arrow icon on the left and a close button (X) on the right. Below the title, there is a prompt: "Type the account name and password your Internet service provider has given you." There are two input fields: "E-mail username:" containing the text "johnsmith" and "Password:" containing six black dots. Below the password field is a checked checkbox labeled "Remember password". At the bottom right, there are two buttons: "Next" (highlighted in blue) and "Cancel". Three black arrows originate from the text below the dialog: one points to the "E-mail username:" label, one points to the "Password:" label, and one points to the "Next" button.

Enter your username, and your password, in the spaces provided, and then left click on Next



This will bring you to the last step. Left click on Finish and this will save your settings.



Once the information is entered this is what you will see under internet accounts mail.wcc.net default.

